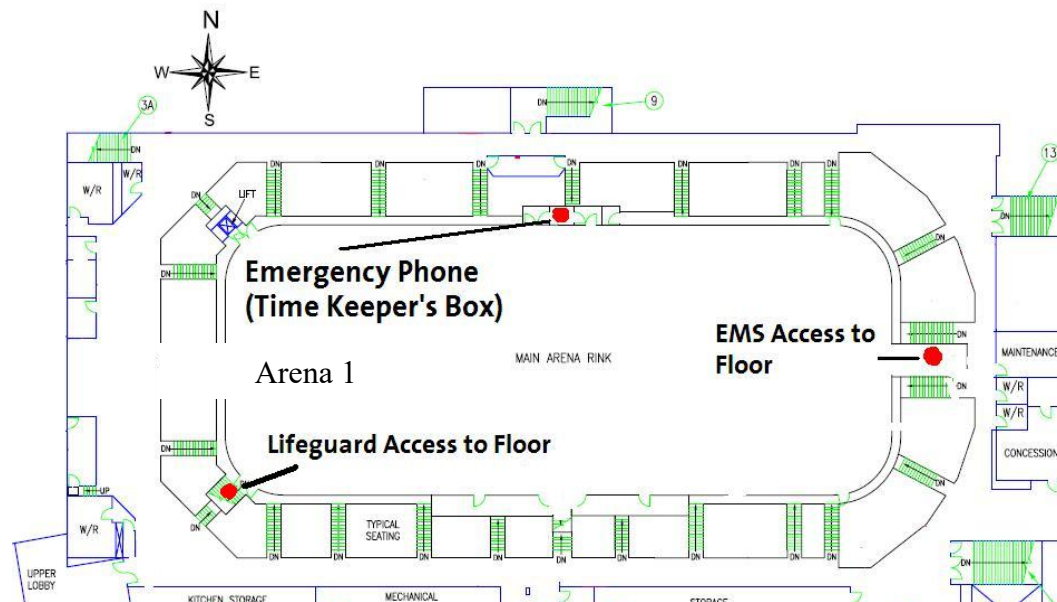


## Emergency Action Plan Arena 1 Playing Surface

This EAP is to be activated in the event of a major injury to a player, team official or game official during a game.



Basic Info

<b>Facility Name:</b>	Poirier Sport & Leisure Complex – Arena 1	<b>Address:</b>	633 Poirier Street, Coquitlam, BC
<b>Phone Number:</b>	604-927-6027	<b>Directions:</b>	-Enter <b>North</b> parking lot off of Poirier St (Como Lake Side) -Drive to back of rink and enter through Zamboni bay at East end of Facility

Emergency Telephone Numbers

**Emergency:** 911

**Non Emergency Numbers:**

**Ambulance:** (9)604-942-4404  
**Fire Dept:** (9)604-942-4404  
**Police:** (9)604-945-1550  
**Front Desk:** 8027 (internal phone)

EAP Roles

**1) Charge Person** (First Responder)

- Assess injury status of player
- Advise **Call Person** if EMS required

**2) Call Person** (Timekeeper)

- Call (9)911 if EMS requested by **Charge Person**
- Ask for ambulance. Give the operator a brief description of the injury (suspected spinal, suspected broken leg etc). Give name and address of facility. Give the directions noted above.

**Before 10:00pm**

- Phone front desk at **8027** to advise reception that EMS has been called.
- If 911 asks for a callback number, give the front desk number **604-927-6027**

**After 10:00pm (facility closed)**

- Advise Arena Maintenance that EMS has been called.

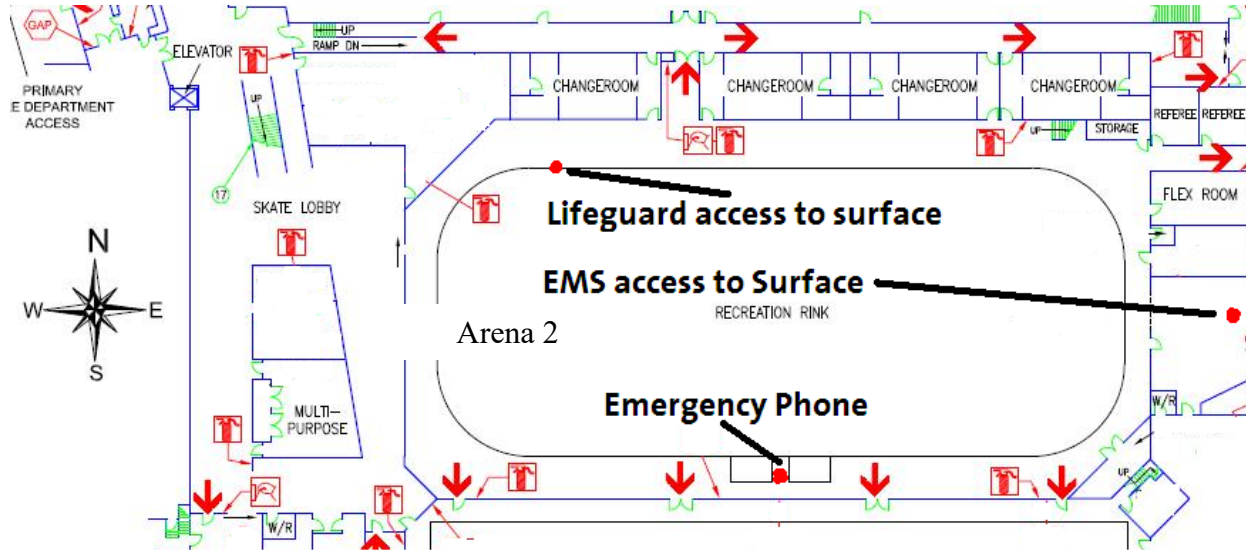
**3) Control Person** (Supervisor on Duty)

- Contacts PSLC Guard room and request lifeguard response on the Arena 1 Floor
- Contacts Arena Maintenance Workers to clear path through Zamboni bay (open gates). Advise AMW to stand outside the Zamboni gate to direct EMS in
- Sends someone to stand at the entrance to the North Parking lot to wave down EMS and direct them to Zamboni entrance

## Emergency Action Plan

### Arena 2 Playing Surface

This EAP is to be activated in the event of a major injury to a player, team official or game official during a game.



Basic Info

<b>Facility Name:</b>	Poirier Sport & Leisure Complex – Arena 2	<b>Address:</b>	633 Poirier Street, Coquitlam, BC
<b>Phone Number:</b>	604-927-6027	<b>Directions:</b>	-Enter <b>North</b> parking lot off of Poirier St (Como Lake Side) -Drive to back of rink and enter through Zamboni bay at East end of Facility

Emergency Telephone Numbers

**Emergency:** 911 (from this phone)

**Non Emergency Numbers:**

**Ambulance:** (9)604-942-4404

**Fire Dept:** (9)604-942-4404

**Police:** (9)604-945-1550

**Front Desk:** 8027 (internal phone)

EAP Roles

**1) Charge Person** (First Responder)

- Assess injury status of player
- Advise **Call Person** if EMS required

**2) Call Person** (Timekeeper)

- Call (9)911 if EMS requested by **Charge Person**
- Ask for ambulance. Give the operator a brief description of the injury (suspected spinal, suspected broken leg etc). Give name and address of facility. Give the directions noted above.

**Before 10:00pm**

- Phone front desk at **8027** to advise reception that EMS has been called.
- If 911 asks for a callback number, give the front desk number **604-927-6027**

**After 10:00pm (facility closed)**

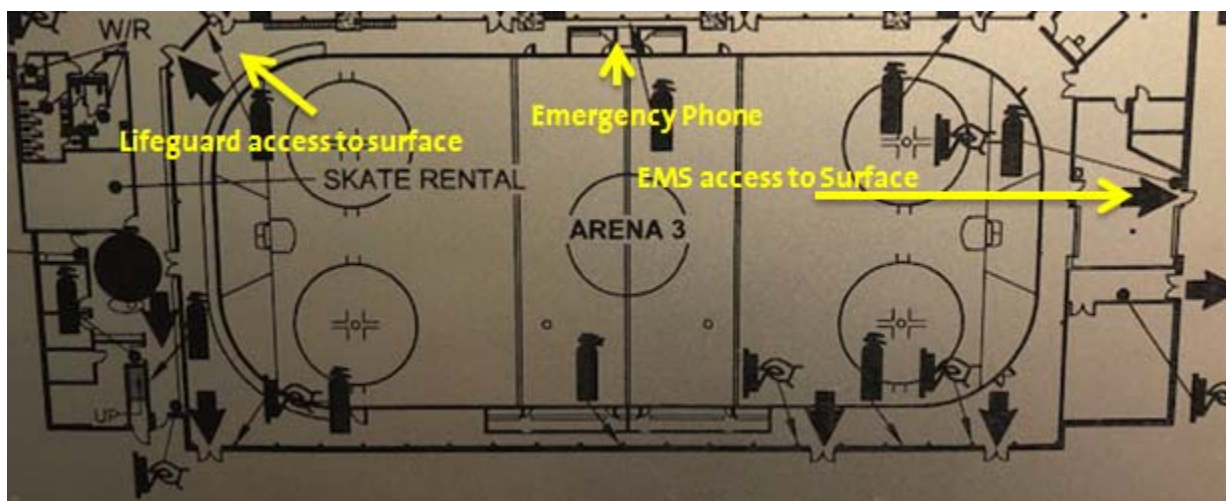
- Advise Arena Maintenance that EMS has been called.

**3) Control Person** (Supervisor on Duty)

- Contacts PSLC Guard room and request lifeguard response on the Arena 2 Floor
- Contacts Arena Maintenance Workers to clear path through Zamboni bay (open gates). Advise AMW to stand outside the Zamboni gate to direct EMS in
- Sends someone to stand at the entrance to the North Parking lot to wave down EMS and direct them to Zamboni entrance

## Emergency Action Plan Arena 3 Playing Surface

This EAP is to be activated in the event of a major injury to a player, team official or game official during a game.



Basic Info

<b>Facility Name:</b>	Poirier Sport & Leisure Complex – Arena 3	<b>Address:</b>	633 Poirier Street, Coquitlam, BC
<b>Phone Number:</b>	604-927-6027	<b>Directions:</b>	-Enter <b>North</b> parking lot off of Poirier St (Como Lake Side) -Drive to back of rink and enter through Zamboni bay at East end of Facility

Emergency Telephone Numbers

**Emergency:** 911 (from this phone)

**Non Emergency Numbers:**

**Ambulance:** (9)604-942-4404

**Fire Dept:** (9)604-942-4404

**Police:** (9)604-945-1550

**Front Desk:** 8027 (internal phone)

EAP Roles

**1) Charge Person** (First Responder)

- Assess injury status of player
- Advise **Call Person** if EMS required

**2) Call Person** (Timekeeper)

- Call (9)911 if EMS requested by **Charge Person**
- Ask for ambulance. Give the operator a brief description of the injury (suspected spinal, suspected broken leg etc). Give name and address of facility. Give the directions noted above.

**Before 10:00pm**

- Phone front desk at **8027** to advise reception that EMS has been called.
- If 911 asks for a callback number, give the front desk number **604-927-6027**

**After 10:00pm (facility closed)**

- Advise Arena Maintenance that EMS has been called.

**3) Control Person** (Supervisor on Duty)

- Contacts PSLC Guard room and request lifeguard response on the Arena 3 Floor
- Contacts Arena Maintenance Workers to clear path through Zamboni bay (open gates). Advise AMW to stand outside the Zamboni gate to direct EMS in
- Sends someone to stand at the entrance to the North Parking lot to wave down EMS and direct them to Zamboni entrance